



TMA - Traffic Monitoring and Analysis VEHICULAR TRAFFIC MONITORING AND ANALYSIS

The knowledge of the volumes and modes in which vehicular flows impact on road infrastructures is the basis of any analysis of efficiency and planning of interventions on road stretches and intersections. The set of operations and tools included in the TMA (Traffic Monitoring and Analysis) package provides an answer to this need, with different configurations according to the different objectives of data use.

Activities on the field:

- Design and development of **automated counts of vehicular flows** in transit on different road sections;
- Survey on **maneuvers at road intersections**;
- **Interviews with drivers** on road sections to collect the reasons, the frequency, the origin and the destination of the trip.
- Interviews with **public transport users** to collect information about the **customer satisfaction** or to identify the type of users.

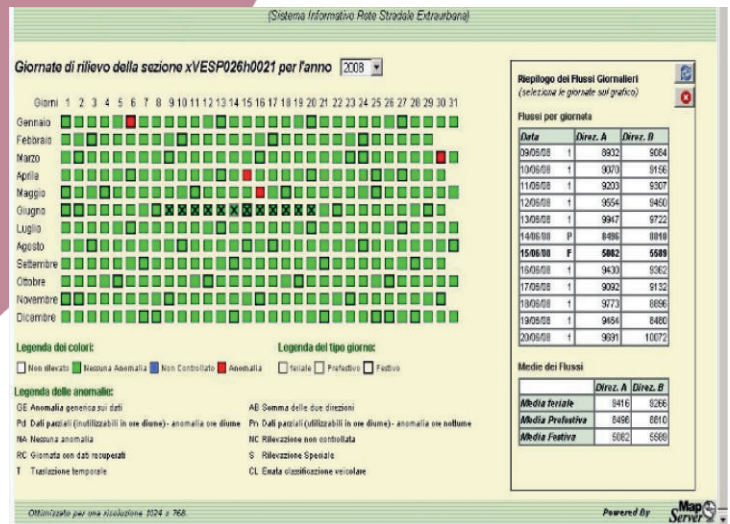
The survey activities can be carried out both on fixed or semi-fixed posts, or on mobile and occasional ones. The survey can be repeated in different times the year or during days with various characteristics. The data collection includes both the quantification of flows and the definition of the size and speed of vehicles.

Tools and products provided:

- **Database of the acquired data**, with aggregation levels based on the customer targets and objectives;
- **Representation of summary or detail** of the collected data with relevant notes and interpretative

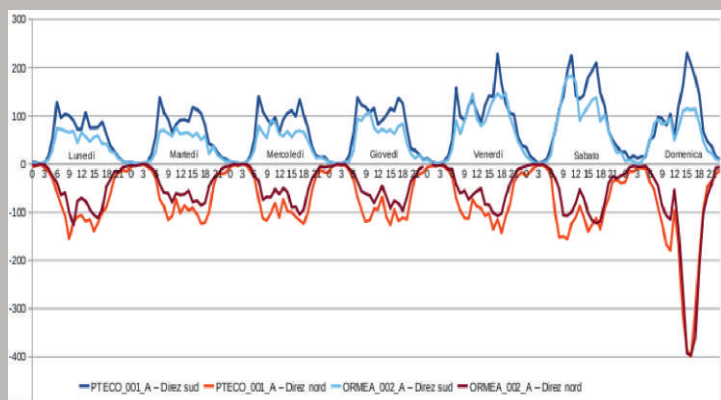
reports;

- **Matrix on daily mobility** for time slots, finalized to represent the territorial distribution of relationships or to be used with models of scenarios simulation.
- **Functional classification of road stretches**, generated by comparing the analysis between the road platform features and the level of vehicular load



served.

Materials and data are supplied on different supports and formats, according to the equipment and software that will be used.



Related packages:

- MRN - Models of Road Network
- DBM - Database Build and Management
- RNM - Road Network Maintenance

TPI Ingegneria srl

Civil Engineering, Transportation Engineering and I.T. Systems
via XXXI Ottobre, 23 - 32032 Feltre (BL)
Tel/Fax: + 39 0439 190 1681 email: info@tpinet.it

